



Plate 16: Location B36, camera facing south. Film H, frame 1.

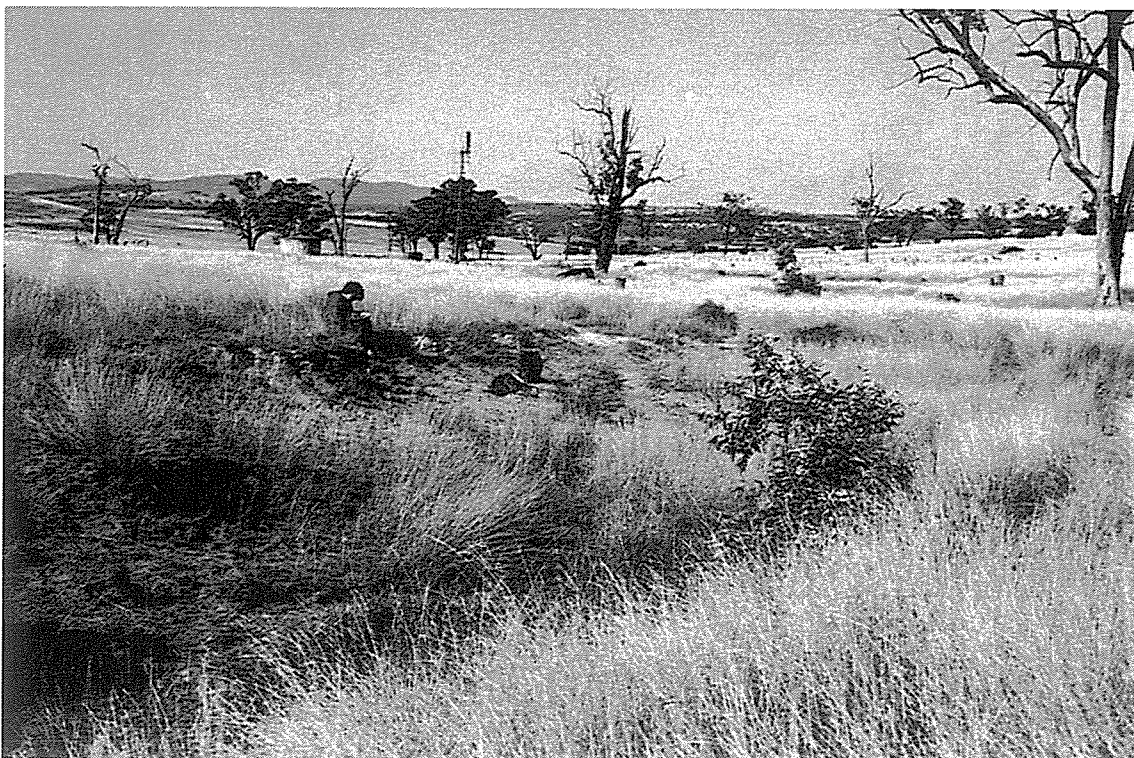


Plate 17: Location C5 and area of PAD. Camera facing east. Film B, frames 13-15.



Plate 18: General view over catchment C. Locations C6-C11 along gully. Camera facing north-east. Film B, frames 16-18.



Plate 19: Location C20, camera facing north-west. Film B, frame 24.





Plate 20: Location C21. Film B, frame 23.



Plate 21: Location D11, camera facing east. Film B, frame 19.

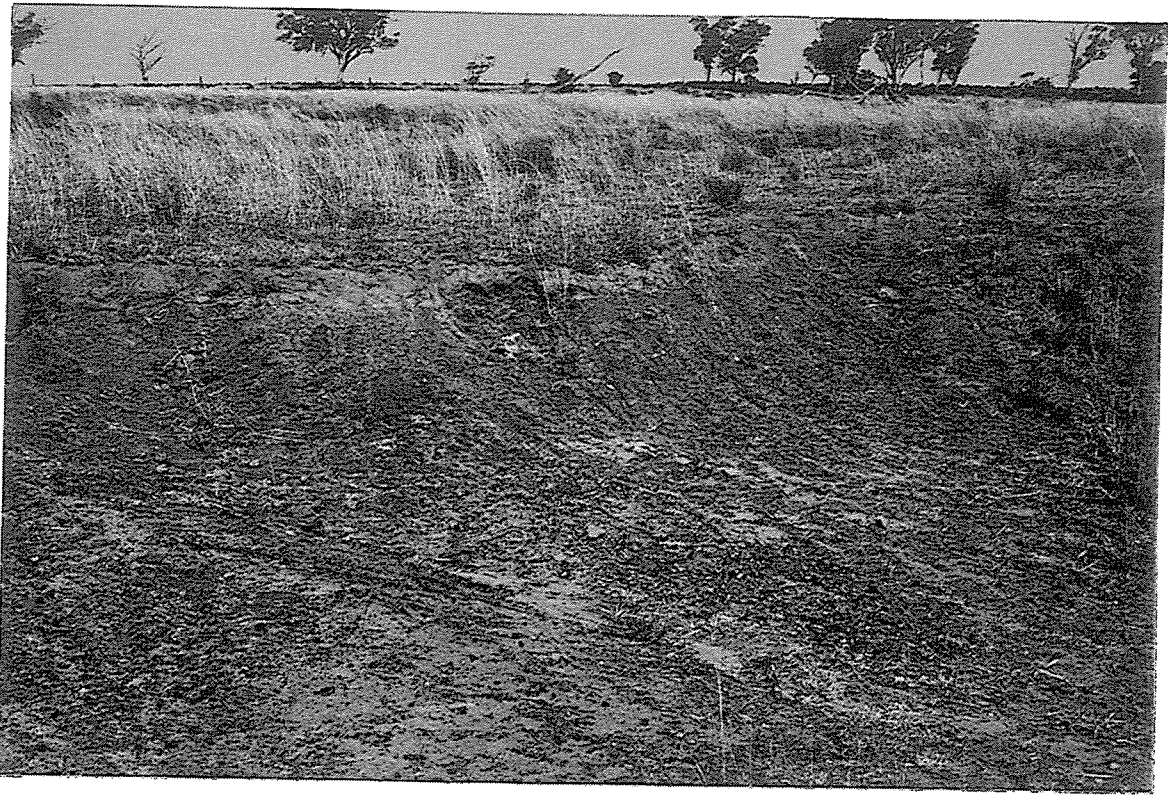


Plate 22: Location D16, camera facing south. Film B, frame 20.



Plate 23: Location D22. Film B, frame 21.





Plate 24: Location D23, camera facing north-east. Film B, frame 22.



Plate 25: General view over middle reaches of catchment E. Camera facing south.  
Film C, frames 19A-21A.

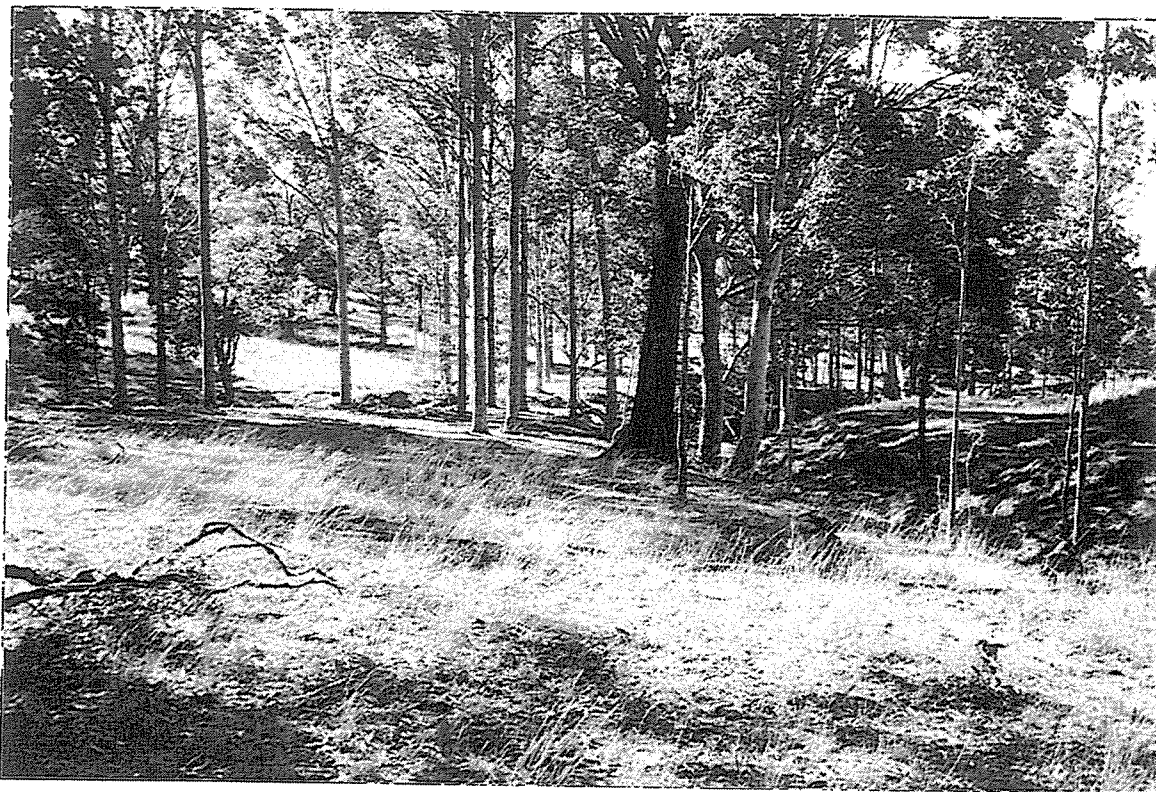


Plate 26: Location E2, camera facing east. Film A, frames 16A-18A.



Plate 27: Location E4, camera facing south. Film A, frames 19A-21A.





Plate 28: Middle reaches of catchment E, camera facing west. Film E, frames 19-21.



Plate 29: Deep erosion in catchment E. Film E, frames 25-27.

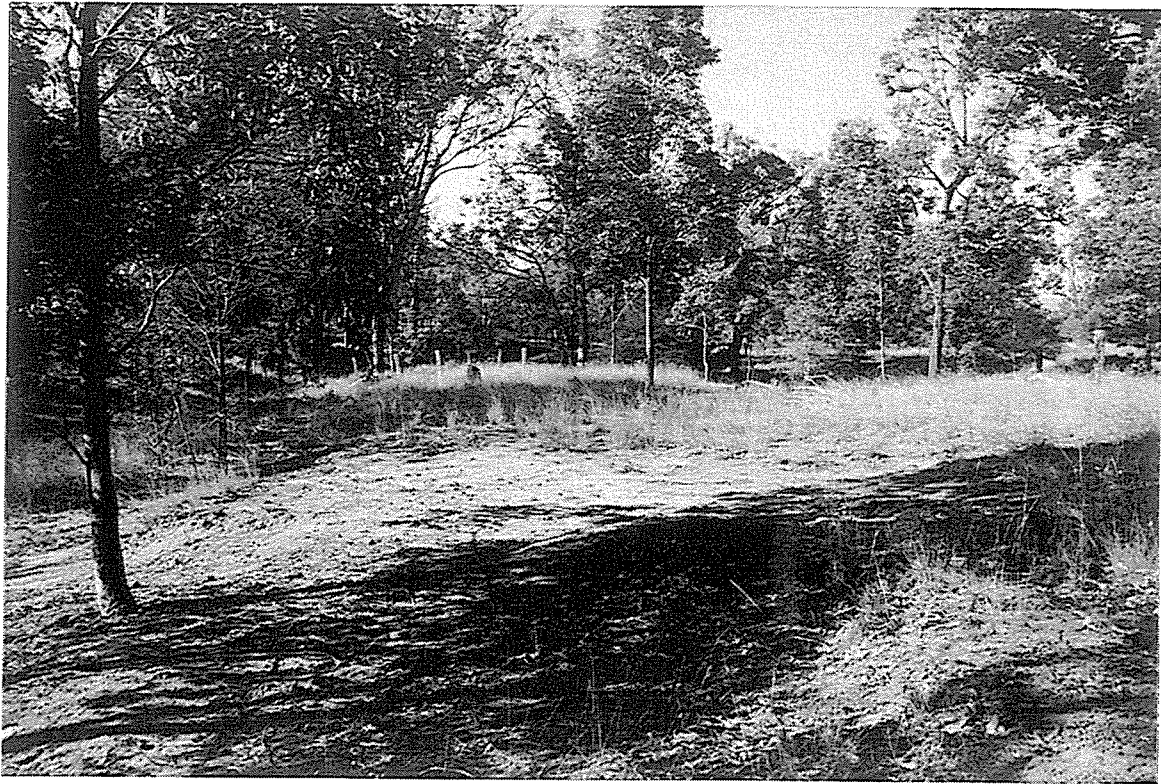


Plate 30: Location E11, camera facing east. Film E, frames 28-30.

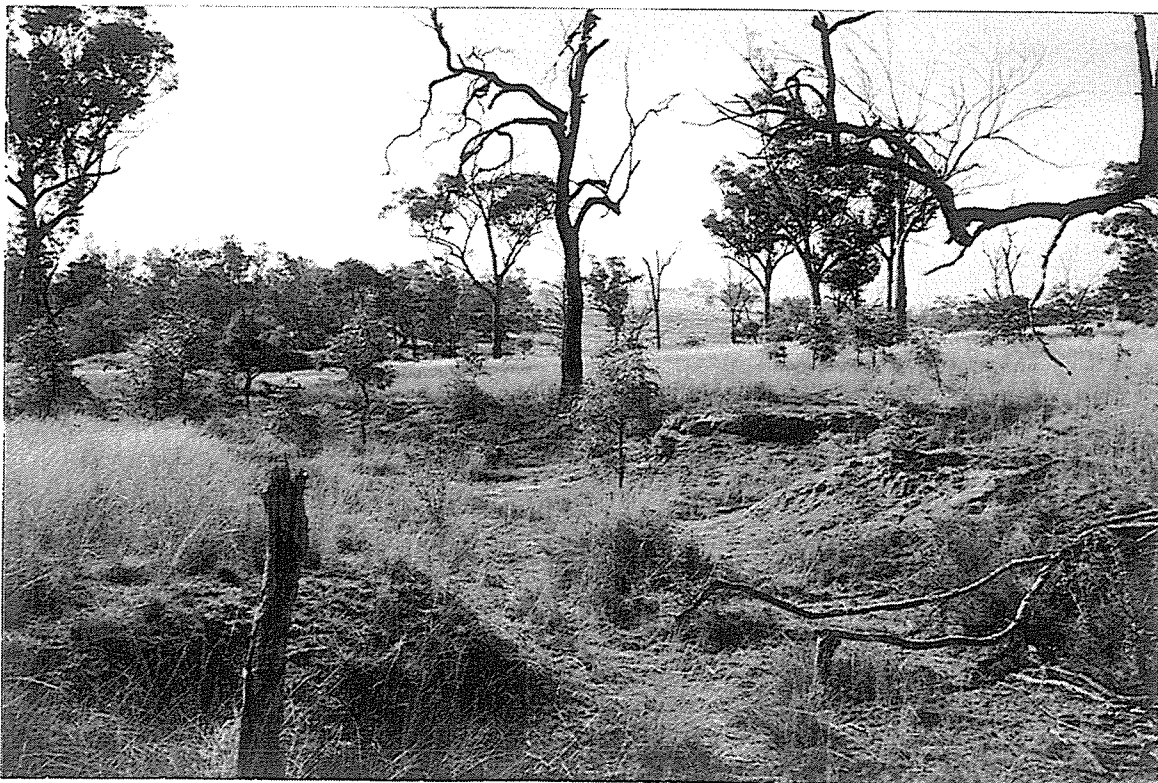


Plate 31: Location E12, camera facing north-east. Film E, frames 22-24.





Plate 32: Location E18, camera facing east. Film F, frames 18-20.



Plate 33: Location E19, camera facing south-east. Film F, frames 15-17.



Plate 34: Location E22, camera facing south. Film F, frames 11-13.



Plate 35: General view over lower catchment E. Camera facing north-east. Film F, frame 14.





Plate 36: Location F7, camera facing west. Film H, frames 9-11.



Plate 37: Location F8, camera facing south-west. Film H, frames 15-17.



Plate 38: General view over catchment G, camera facing north-east. Film C, frames 0A-1A.



Plate 39: General view over lower catchment G; gravel extraction area. Film E, frames 7-9.





Plate 40: General view over upper catchment H, camera facing north. Film C, frames 3A-5A.



Plate 41: Location H6, camera facing west. Film E, frames 4-6.



Plate 42: General view over location H6 and PAD. Camera facing south-east. Film E, frames 1-3.



Plate 43. General view over catchment I. Location I14 is adjacent to dam in the mid-ground. Camera facing north-east. Film D, frames 31-33.





Plate 44: Upper reaches of catchment I, camera facing south-east. Film D, frames 28-30.



Plate 45: Location I1, camera facing east. Film C, frames 13A-15A.



Plate 46: Location I2, taken from I3. Camera facing north-east. Film C, frames 16A-18A.



Plate 47: Location I4, camera facing north. Film C, frames 9A-12A.





Plate 48: Location I5, camera facing west. Film C, frames 6A-8A.



Plate 49: Location I14, camera facing north-east. Film D, frames 24-26.



Plate 50: Location I19, camera facing south-east. I4, I23-25 occur along creek bank.  
Areas of PAD surround sites. Film H, frames 18-20.



Plate 51: Location I33, camera facing north. Film H, frames 24-26.





Plate 52: Location I37 and PAD area, camera facing north. Film H, frames 27-29.

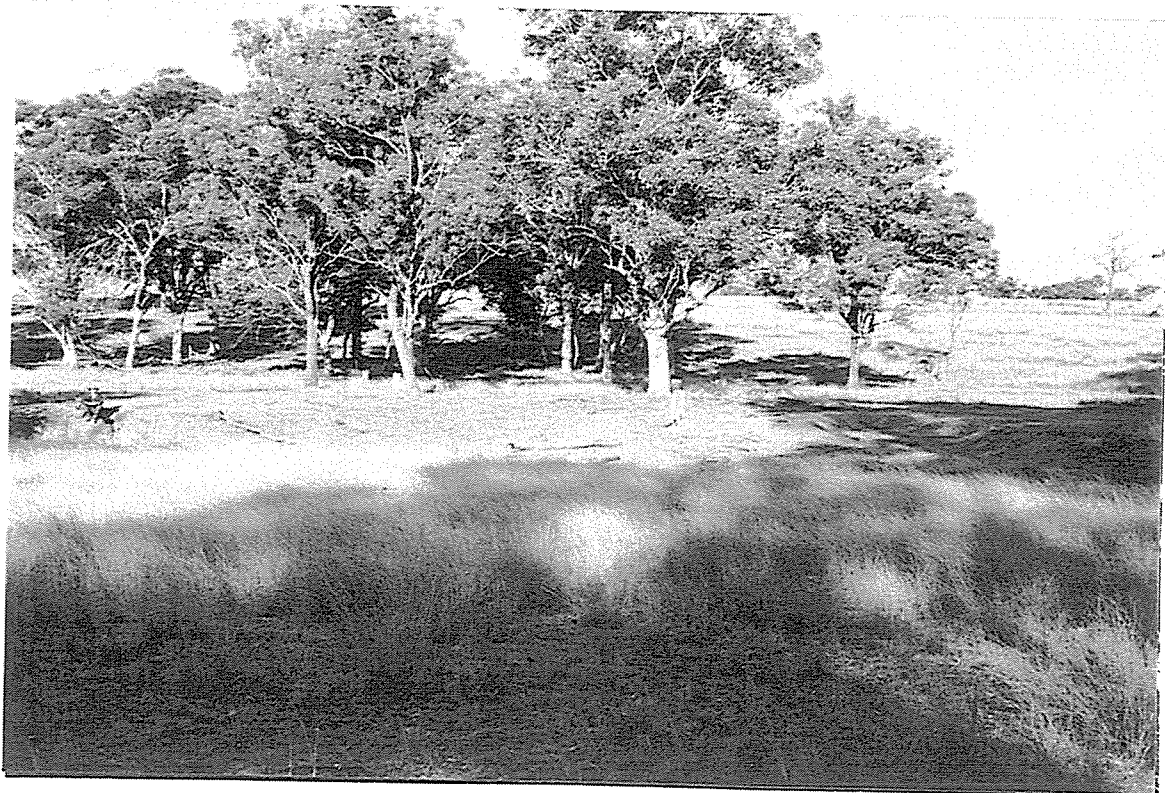


Plate 53: Location I41 and area of PAD, camera facing east. Film H, frames 30-32.



Plate 54: Location IJ2, camera facing north-east. IJ3 in left side mid-ground. Film G, frames 6-8.



Plate 55: Location IJ8 occurs along the creek bank near the fence. Camera facing east.  
Film G, frames 15-17.



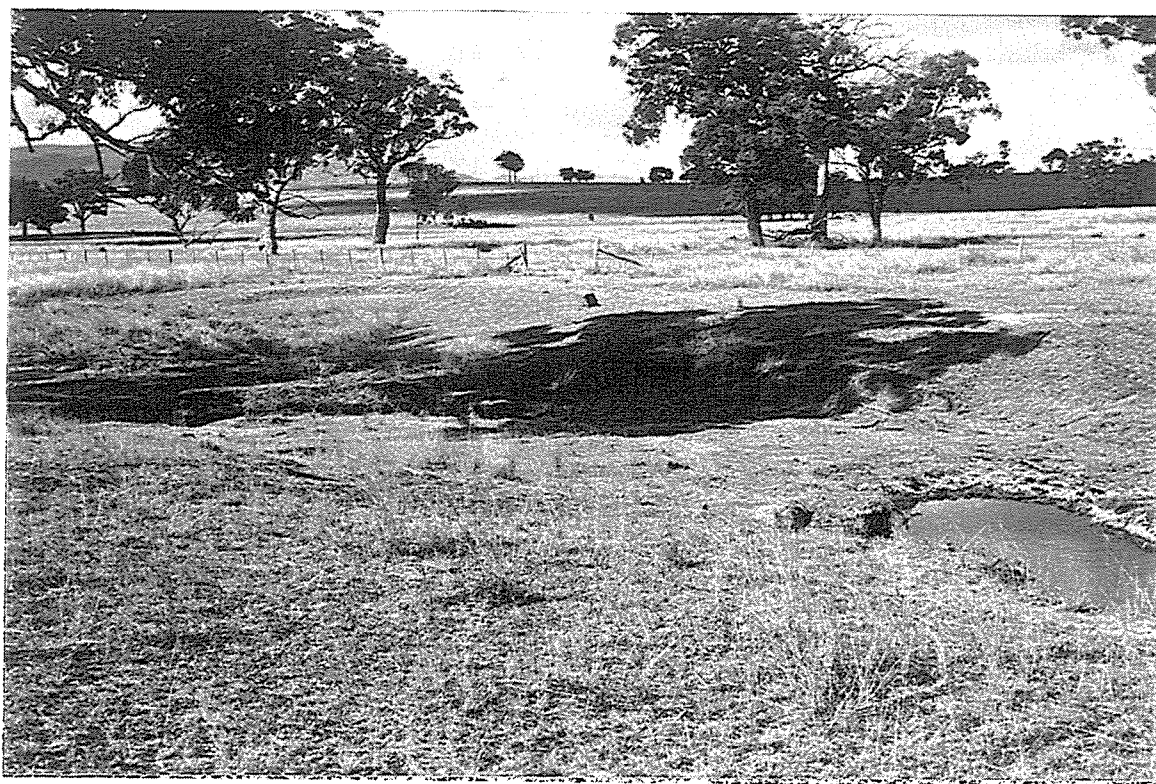


Plate 56: Location IJ9, camera facing east. Film G, frames 12-14.



Plate 57: Location J4, camera facing west. Film D, frames 34-36.



Plate 58: Location J22 and PAD. Taken from dam wall, camera facing south-west.  
Film D, frames 8-10.



Plate 59: General view over location J25 (mid-ground right side of photo) and PAD. Taken from dam wall, camera facing north-east. Film D, frames 5-7.



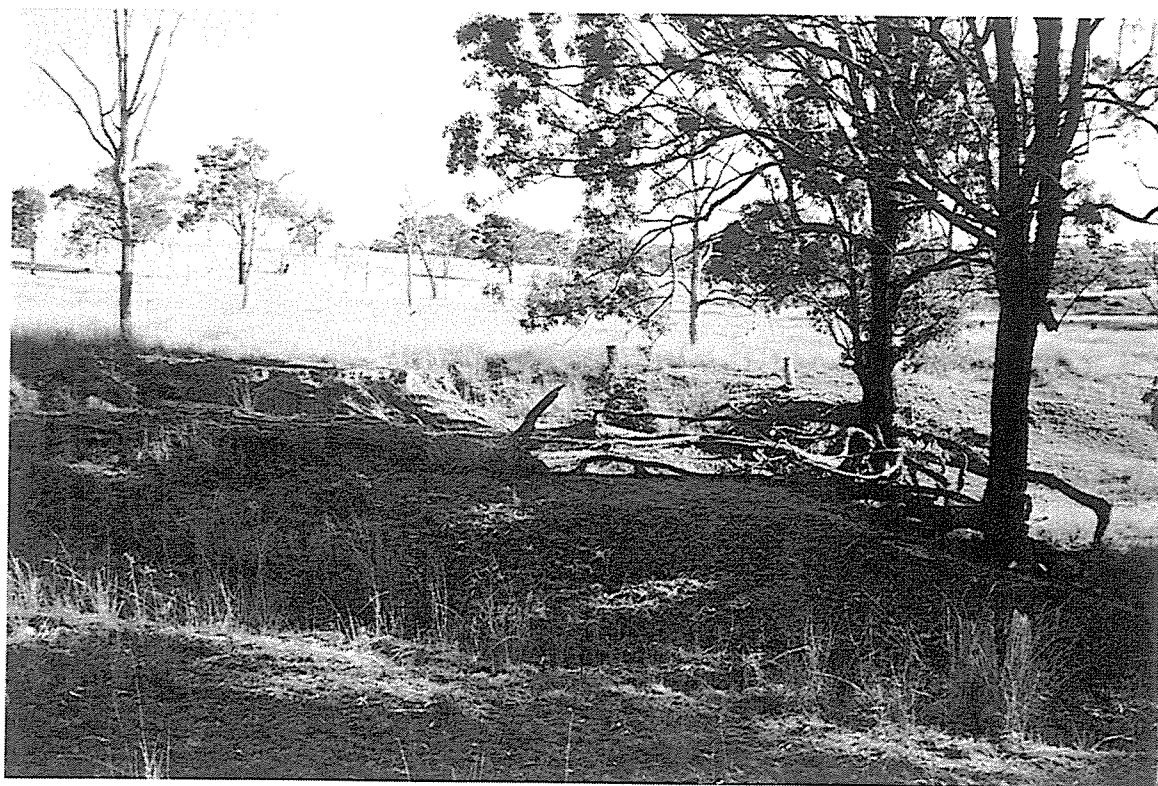


Plate 60: Location J25, camera facing south-west. Film D, frames 1-3.



Plate 61: Location J33, camera facing north. Film D, frames 14-16.



Plate 62: General view over middle reaches of catchment J. Location J35 was recorded along the track. Camera facing east. Film D, frames 21-23.



Plate 63: General view of PAD across confluence within catchment J. Location J33 in left side foreground of photo, J29-J32 to north. Camera facing east. Film D, frames 11-13.



APPENDIX B:  
DATA ON  
ARTEFACT LOCATIONS  
& EXPOSURES