

11 May 2022

Mr Stephen O'Donoghue
Director Resource Assessments
Department of Planning, Industry and Environment
GPO Box 39
Sydney, NSW 2001

Dear Steve,

RE: MOUNT PLEASANT OPTIMISATION PROJECT – MINOR AMENDMENT TO DEVELOPMENT APPLICATION AREA

As you are aware, MACH Energy Australia Pty Ltd (MACH) has recently lodged a modification to its existing Development Consent (DA 92/97) to rectify an apparent administrative error in the drafting of Development Consent (DA 92/97). This rectification will clarify that the operation of the Mount Pleasant Operation controlled release dam (DW1) and associated water pipeline is permitted under the existing Development Consent (DA 92/97).

The operation of the controlled release dam (DW1) also forms a component of the Mount Pleasant Optimisation Project (SSD 10418) as shown on the Project General Arrangements (Figures 3-4 to 3-10) and the Indicative Water Management Schematic (Figure 3-16) in the Environmental Impact Statement (EIS).

In addition to providing reference to the EIS, MACH requests that any development consent granted for the Mount Pleasant Optimisation Project also provides reference to MACH's letter of 15 February 2018 in the list of relevant EA (Mod 3) documents.

Minor Amendment to Development Application Area

Since lodgement of the EIS, the Mount Pleasant Operation and the Bengalla Mine have continued to progress engineering design, standard due diligence and relevant statutory applications related to the construction and operation of DW1 in accordance with commercial agreements in place between the two mines.

A part transfer of Mining Lease (ML) 1728 from Bengalla Mining Company Pty Limited to MACH has been applied for to facilitate the construction and operation of DW1 and associated water pipeline.

The proposed location of DW1 and associated water pipeline is within the Development Application area of the Mount Pleasant Optimisation Project (SSD 10418). However, a small portion of the proposed part transfer of ML 1728 is located outside of the SSD 10418 Development Application area (Attachment 1).

MACH proposes to extend the SSD 10418 Development Application area to include the full extent of the proposed part transfer of ML 1728, including the addition of three lots to the Project Schedule of Lands (Table 1).

Table 1
Lot to be Added to the Schedule of Lands

Lot	DP	Landowner
1	718834	NEW HOPE BENGALLA PTY LTD & TAIPOWER BENGALLA PTY LIMITED
2	561117	NEW HOPE BENGALLA PTY LTD & TAIPOWER BENGALLA PTY LIMITED
10	236668	TAIPOWER BENGALLA PTY LIMITED & NEW HOPE BENGALLA PTY LTD

New Hope Bengalla Pty Ltd and Taipower Bengalla Pty Ltd will provide written consent to Lots 1, 2 and 10 in Table 1 being incorporated in the SSD 10418 Development Application.

MACH has attached the following supporting information to this letter:

- Attachment 1 – Figure that shows the proposed extension to the Development Application Area.
- Attachment 2 – Revised SSD 10418 Development Application Area.
- Attachment 3 – Revised SSD 10418 Schedule of Land.

A minor typographic error was identified in the description of Lot 104 DP1148907 in the EIS Schedule of Lands and this has also been corrected in Attachment 3.

If you require any further information, please contact the undersigned.

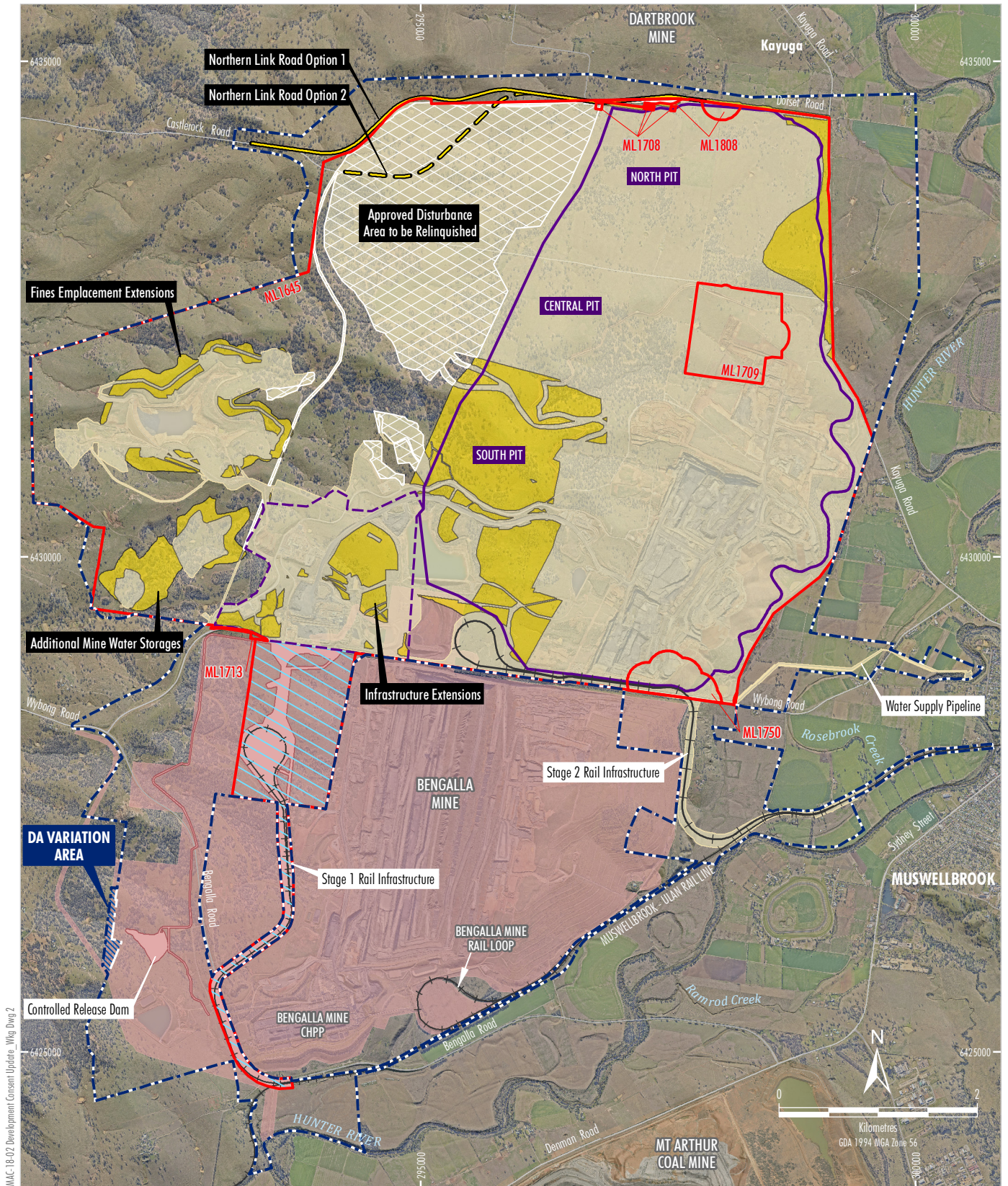
Yours sincerely,



Chris Lauritzen
General Manager Resources Development
Mount Pleasant Operation

Attachment 1

Proposed Extension to SSD 10418 Development Application Area



MAC-18-02 Development Consent Update - Wkg Dwg 2

LEGEND

- Existing Mine Elements
- Mining Lease Boundary (Mount Pleasant Operation)
- Approximate Extent of Existing/Approved Surface Development (DA92/97) ¹
- Infrastructure to be removed under the Terms of Condition 37, Schedule 3 (DA92/97)
- Bengalla Mine Approved Disturbance Boundary (SSD-5170)
- Existing/Approved Mount Pleasant Operation Infrastructure within Bengalla Mine Approved Disturbance Boundary (SSD-5170) ¹
- Additional/Revised Project Elements
- Approved Disturbance Area to be Relinquished ²
- Approximate Additional Disturbance of Project Extensions ¹
- Northern Link Road Option 1 Centreline ³
- Northern Link Road Option 2 Centreline
- Approximate Extent of Project Open Cut and Waste Rock Emplacement Landforms
- Revised Infrastructure Area Envelope

NOTES

1. Excludes some incidental Project components such as water management infrastructure, access tracks, topsoil stockpiles, power supply, temporary offices, other ancillary works and construction disturbance.
2. Subject to detailed design of Northern Link Road alignment.
3. Preferred alignment subject to landholder access.



- SSD Development Application Area
- Revised SSD Development Application Area
- Additional ML 1728 Part-transfer Area

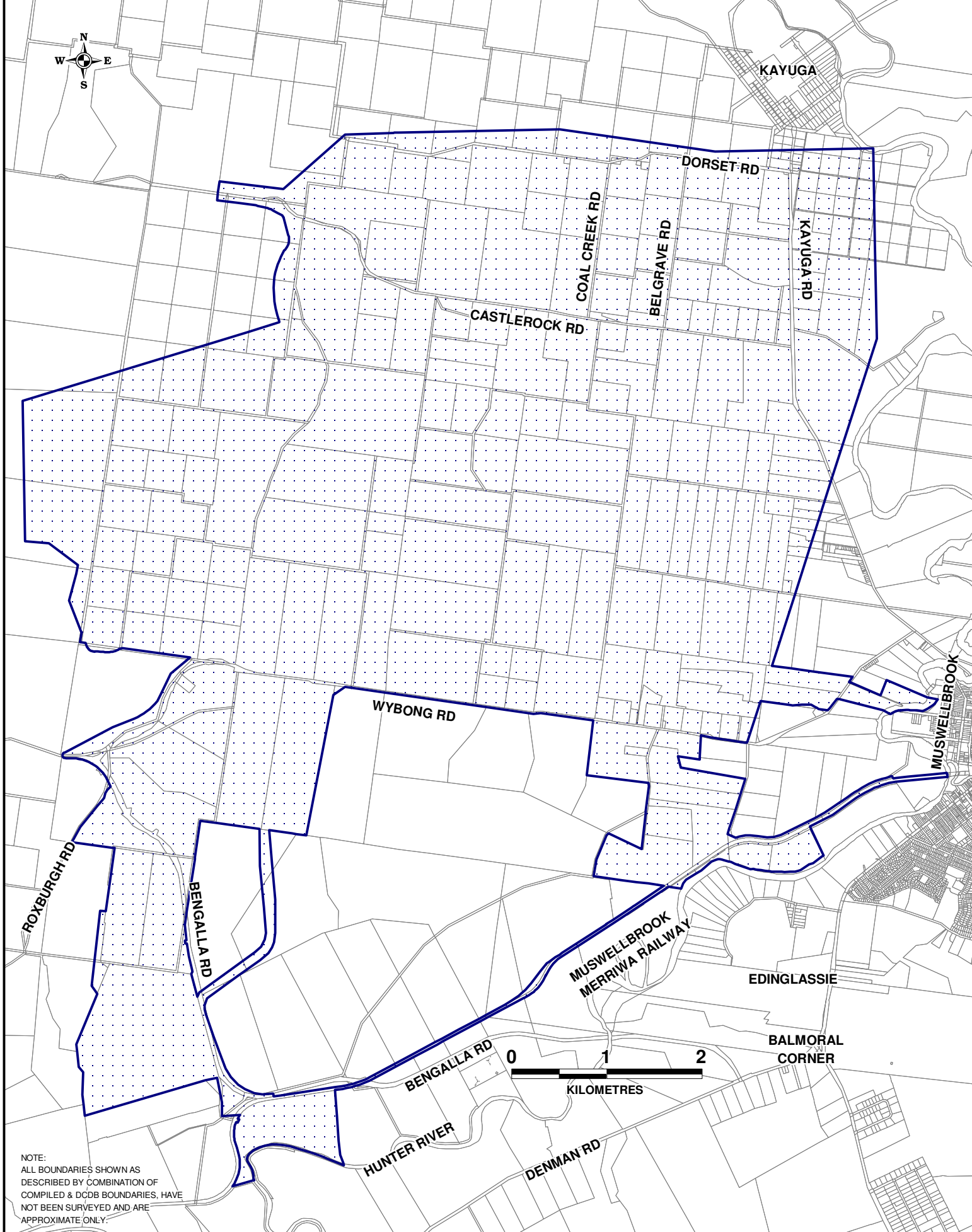
Source: MACH (2020); NSW Spatial Services (2020); Department of Planning and Environment (2016) Orthophoto: MACH (2020)

MACHEnergy

MOUNT PLEASANT OPTIMISATION PROJECT
Project General Arrangement

Attachment 2

Revised SSD 10418 Development Application Area



**Mount Pleasant Optimisation Project
Provisional Development Application Area**

THE SITE INCLUDES ALL LAND AND/OR LOTS LISTED IN THE SCHEDULE OF LANDS TABLE TO THE EXTENT THAT SUCH LAND AND/OR LOTS FALL WITHIN AND/OR ARE INTERSECTED BY THE DEVELOPMENT CONSENT BOUNDARY

Attachment 3

Revised SSD 10418 Schedule of Land

Tenure Type	Lot	Section	Deposited Plan Number
Freehold	1	1	DP2770
Freehold	1	1	DP192121
Freehold	1	2	DP2770
Freehold	1	2	DP192121
Freehold	1	3	DP2770
Freehold	1	4	DP2770
Freehold	1	5	DP2770
Freehold	1	6	DP2770
Freehold	1	8	DP2770
Freehold	1		DP104563
Freehold	1		DP112742
Freehold	1		DP114090
Freehold	1		DP194043
Freehold	1		DP213293
Freehold	1		DP254339
Freehold	1		DP312392
Freehold	1		DP318999
Freehold	1		DP401237
Freehold	1		DP544039
Freehold	1		DP629491
Freehold	1		DP634490
Freehold	1		DP655691
Freehold	1		DP706645
Freehold	1		DP742324
Freehold	1		DP744333
Freehold	1		DP745369
Freehold	1		DP780673
Freehold	1		DP791576
Crown	1		DP904885
Freehold	1		DP905281
Freehold	1		DP906668
Freehold	1		DP911212
Freehold	1		DP915913
Freehold	1		DP944232
Freehold	1		DP998239
Freehold	1		DP1072667
Freehold	1		DP1080962
Freehold	1		DP1081385
Freehold	1		DP1100374
Freehold	1		DP1137590
Freehold	1		DP1199733
Freehold	1		DP718834
Freehold	2	1	DP2770
Freehold	2	2	DP192121

Tenure Type	Lot	Section	Deposited Plan Number
Freehold	2	3	DP2770
Freehold	2	4	DP2770
Freehold	2	5	DP2770
Freehold	2	6	DP2770
Freehold	2	8	DP2770
Freehold	2		DP104563
Freehold	2		DP112742
Freehold	2		DP114090
Freehold	2		DP194043
Freehold	2		DP629491
Freehold	2		DP634490
Freehold	2		DP706645
Freehold	2		DP780673
Freehold	2		DP791576
Freehold	2		DP801249
Freehold	2		DP915913
Freehold	2		DP997931
Freehold	2		DP998239
Freehold	2		DP1081385
Freehold	2		DP1234475
Freehold	2		DP561117
Freehold	3	1	DP2770
Freehold	3	2	DP192121
Freehold	3	3	DP2770
Freehold	3	5	DP2770
Freehold	3	8	DP2770
Freehold	3	28	DP758554
Freehold	3	29	DP758554
Freehold	3		DP112742
Freehold	3		DP194043
Freehold	3		DP629491
Freehold	3		DP791576
Freehold	3		DP998239
Freehold	3		DP998477
Freehold	3		DP1183514
Freehold	3		DP1199733
Freehold	3		DP1234475
Freehold	4	1	DP2770
Freehold	4	2	DP2770
Freehold	4	2	DP192121
Freehold	4	3	DP2770
Freehold	4	4	DP2770
Freehold	4	5	DP2770
Freehold	4	6	DP2770

Tenure Type	Lot	Section	Deposited Plan Number
Freehold	4	8	DP2770
Freehold	4	28	DP758554
Freehold	4	29	DP758554
Freehold	4		DP801249
Freehold	4		DP1199733
Freehold	4		DP1234475
Freehold	5	1	DP2770
Freehold	5	2	DP192121
Freehold	5	3	DP2770
Freehold	5	4	DP2770
Freehold	5	6	DP2770
Freehold	5	8	DP2770
Freehold	5	28	DP758554
Freehold	5		DP112742
Freehold	5		DP801249
Freehold	5		DP1199733
Freehold	5		DP1234475
Freehold	6	1	DP2770
Freehold	6	2	DP192121
Freehold	6	3	DP2770
Freehold	6	8	DP2770
Freehold	6	28	DP758554
Freehold	6		DP749716
Freehold	6		DP750926
Freehold	6		DP821183
Freehold	6		DP1199733
Freehold	6		DP1234475
Freehold	7	2	DP192121
Freehold	7		DP112742
Freehold	7		DP236668
Freehold	7		DP749716
Freehold	7		DP784436
Freehold	7		DP821183
Freehold	7		DP1170997
Freehold	7		DP1199733
Freehold	7		DP1234475
Freehold	8		DP255048
Freehold	8		DP770911
Freehold	8		DP1170997
Freehold	8		DP1199733
Freehold	9		DP255048
Freehold	9		DP750926
Freehold	9		DP1199733
Freehold	10		DP255048
Freehold	10		DP750926

Tenure Type	Lot	Section	Deposited Plan Number
Freehold	10		DP1184928
Freehold	10		DP1199733
Freehold	10		DP236668
Freehold	11		DP112742
Freehold	11		DP255048
Freehold	11		DP1051153
Freehold	11		DP1184928
Freehold	12		DP112742
Freehold	12		DP255048
Freehold	12		DP659924
Freehold	12		DP1112792
Freehold	13		DP112742
Freehold	13		DP255048
Freehold	13		DP750926
Freehold	13		DP1112792
Freehold	14	8	DP2770
Freehold	14		DP112742
Freehold	14		DP255048
Freehold	14		DP1112792
Freehold	15		DP112742
Freehold	15		DP255048
Freehold	15		DP750926
Freehold	15		DP1112792
Freehold	16		DP112742
Freehold	16		DP255048
Freehold	16		DP750926
Freehold	16		DP1112792
Freehold	17		DP2770
Freehold	17		DP112742
Freehold	18		DP112742
Freehold	19		DP112742
Freehold	19		DP750926
Freehold	20		DP112742
Freehold	20		DP747226
Freehold	20		DP1072668
Freehold	21		DP554140
Freehold	21		DP750926
Freehold	22		DP554140
Freehold	22		DP870608
Freehold	22		DP1041946
Freehold	23		DP1041946
Freehold	24		DP742543
Freehold	25		DP1053537
Freehold	26		DP750926
Freehold	27		DP745897

Tenure Type	Lot	Section	Deposited Plan Number
Freehold	28		DP750926
Freehold	29		DP731706
Freehold	30		DP137297
Freehold	35		DP1076510
Freehold	36		DP1108421
Freehold	38		DP750926
Freehold	39		DP750926
Freehold	41		DP750926
Freehold	42		DP750926
Freehold	43		DP750926
Freehold	44		DP750926
Freehold	45		DP750926
Freehold	50		DP809718
Freehold	51		DP809718
Freehold	71		DP626353
Freehold	71		DP750926
Freehold	72		DP626353
Freehold	72		DP750926
Freehold	73		DP750926
Freehold	74		DP750926
Freehold	86		DP750926
Freehold	90		DP750926
Crown	90		DP1215947
Freehold	91		DP620639
Freehold	91		DP750926
Freehold	92		DP750926
Freehold	93		DP750926
Freehold	94		DP665393
Freehold	100		DP1177385
Freehold	101		DP1148907
Freehold	102		DP1148907
Freehold	103		DP1148907
Freehold	104		DP1148907
Freehold	105		DP1148907
Freehold	106		DP1148907
Freehold	122		DP750926
Freehold	123		DP700578
Freehold	123		DP750926
Freehold	124		DP700578
Freehold	124		DP750926
Freehold	126		DP750926
Freehold	127		DP750926
Freehold	129		DP750926
Freehold	130		DP750926
Freehold	131		DP750926

Tenure Type	Lot	Section	Deposited Plan Number
Freehold	132		DP558246
Freehold	132		DP750926
Freehold	133		DP750926
Freehold	135		DP750926
Freehold	143		DP750926
Freehold	144		DP1120266
Freehold	145		DP1120266
Freehold	146		DP750926
Freehold	147		DP1083411
Freehold	149		DP750926
Freehold	150		DP750926
Freehold	151		DP750926
Freehold	152		DP750926
Freehold	153		DP750926
Freehold	154		DP750926
Freehold	164		DP635272
Freehold	177		DP750926
Freehold	181		DP750926
Freehold	184		DP750926
Freehold	188		DP750926
Freehold	189		DP750926
Freehold	190		DP750926
Freehold	193		DP750926
Freehold	195		DP750926
Freehold	196		DP750926
Freehold	199		DP750926
Freehold	200		DP750926
Freehold	211		DP750926
Freehold	212		DP750926
Freehold	213		DP750926
Freehold	214		DP750926
Freehold	215		DP750926
Freehold	216		DP750926
Freehold	217		DP750926
Freehold	218		DP750926
Freehold	219		DP750926
Freehold	220		DP750926
Freehold	221		DP750926
Freehold	224		DP750926
Freehold	236		DP750926
Freehold	237		DP750926
Freehold	238		DP750926
Freehold	239		DP750926
Freehold	240		DP750926
Freehold	241		DP750926

Tenure Type	Lot	Section	Deposited Plan Number
Freehold	242		DP750926
Freehold	251		DP750926
Freehold	253		DP750926
Freehold	254		DP750926
Freehold	256		DP750926
Freehold	258		DP750926
Freehold	259		DP750926
Freehold	260		DP750926
Freehold	261		DP561919
Freehold	261		DP750926
Freehold	262		DP750926
Freehold	263		DP750926
Freehold	264		DP750926
Freehold	265		DP750926
Freehold	268		DP567444
Freehold	268		DP750926
Freehold	269		DP567444
Freehold	269		DP750926
Freehold	270		DP750926
Freehold	271		DP750926
Freehold	272		DP750926

Tenure Type	Lot	Section	Deposited Plan Number
Freehold	273		DP750926
Freehold	274		DP750926
Freehold	275		DP750926
Freehold	276		DP750926
Freehold	278		DP750926
Freehold	279		DP750926
Freehold	280		DP750926
Freehold	282		DP750926
Freehold	505		DP711996
Freehold	641		DP554159
Freehold	1006		DP1235827
Freehold	1007		DP1235827
Freehold	1008		DP1235827
Freehold	1009		DP1235827
Freehold	1453		DP628493
Crown	7001		DP93329
Crown	7304		DP1146786
Freehold	A		DP174071
Freehold	A		DP432713
Freehold	B		DP174071
Freehold	B		DP432713

Other	
Crown Water Course	Hunter River
State Rail Authority (Crown)	Railway lands located between or adjacent to the above Parcels of Land
Muswellbrook Shire Council or Department of Lands (Crown)	Various Council and Crown Public and Unformed Roads located within, between or adjacent to the above Parcels of Land, including Bengalla Road, Castlerock Road, Dorset Road, Kayuga Road and Wybong Road
Crown	Creeks or streams located within, between or adjacent to the above Parcels of Land. Any Unidentified Crown Land or Crown Land Historical Title Residues located within, between or adjacent to the above Parcels of Land
Freehold	Any Unidentified Historical Title Residues located within, between or adjacent to the above Parcels of Land