

Community

NEWSLETTER



International Women's Day at Mount Pleasant Operation

An update from the MACH Energy team

As we reach the end of the first quarter of 2026, the Mount Pleasant Operation continues to make steady progress across safety, operations, capital works, and regulatory processes. This has been a productive start to the year, and we remain focused on delivering safe, reliable and responsible operations for our community and workforce.

Safety remains our number one priority. We are pleased to report that there were no recordable injuries during this period, reflecting the continued commitment of our workforce to maintaining a strong safety culture. We will continue to reinforce safe behaviours and the goal of ensuring that every person on site goes home safely each day.

Our major capital projects have continued to advance well throughout the quarter. Lower seasonal rainfall has supported strong progress on the Tailings Storage Facility Embankment Raise and the Northern Infrastructure Works, both of which are essential for the long-term continuity of the operation.

The Northern Link Road project remains on track, with the bulk of physical works expected to be completed early in the second half of 2026. These projects are important enabling works that will support future increases in production capacity. As production grows, so too do the employment and contracting opportunities for the Upper Hunter.

Following an extensive and rigorous assessment process and significant inputs from a range of experts, SSD 10418 received approval from the NSW Independent Planning Commission in

September 2022. However, the July 2025 NSW Court of Appeal decision has created uncertainty around that approval and concern across the local community.

MACH Energy has actively responded to the NSW Court of Appeal decision and is committed to pursuing all available pathways to defend the SSD approval, and provide certainty and security for our workforce, suppliers, and the broader community.

We were pleased to receive confirmation that our application seeking leave from the High Court to appeal the NSW Court of Appeal decision has been approved, and we now have a hearing date on 13 May for this very important matter. MACH Energy will continue to operate strictly in accordance with all existing approvals and consent conditions and keep the community informed while these processes progress.

In parallel, Modification 8 to Development Consent DA 92/97 was lodged in December 2025 and placed on public exhibition during late February/early March 2026. There was a strong response from the community, with a large number of positive submissions in support of the Modification received from local residents and stakeholders. Your engagement with this process is deeply appreciated and reinforces the importance of providing certainty for our workforce, our suppliers, and the broader community.

Mount Pleasant remains committed to supporting local jobs, local businesses, and community partnerships across the Upper Hunter. Thank you for your ongoing engagement and support.

Strengthening Operations with Next-Generation Haul Trucks

Mount Pleasant Operation has taken another important step in strengthening the long-term future of the site with the arrival of our first Komatsu 930E-5 haul truck. This delivery marks the beginning of a planned fleet expansion that will see twelve (12) new trucks added during 2026, complementing the seven already operating on site.

Introducing this next generation of haul trucks helps us improve efficiency and reliability across the operation. By standardising our fleet, our maintenance teams can work more effectively, operators can move between trucks with greater ease, and we can keep essential parts and equipment on hand more efficiently. All of this supports smoother day-to-day operations and helps maintain consistent production as the site continues to grow.

The Komatsu 930E-5 also brings environmental benefits. Its modern engine platform significantly reduces particulate emissions compared to older models, supporting our commitments under our primary approvals and helping minimise air-quality impacts for our workforce and surrounding community.

This investment reflects our ongoing commitment to safe, responsible, and sustainable mining at Mount Pleasant, ensuring the operation remains a reliable contributor to local jobs and the Upper Hunter economy for years to come.



Komatsu 930E-5 ready for operation



Komatsu and MACH Energy team accepting handover

2026 Scholarship Recipients

We are proud to introduce the latest recipients of the Mount Pleasant Operation Community Scholarships — a program designed to support local students as they pursue careers that are vital to the future of the Upper Hunter.

This year's recipients represent the talent, ambition, and community spirit that make our region strong:

Lachlan Peasley (Muswellbrook) Bachelor of Engineering – Mechanical

Samuel Redgrove (Singleton) Bachelor of Engineering – Civil

Jade Constable (Muswellbrook) Bachelor of Education

These scholarships help reduce some of the financial pressures associated with study and encourage local students to explore professional pathways that are important to the region. While each student will ultimately choose their own career direction, the program aims to support those who may be interested in building their future in the Upper Hunter and contributing to the services and industries that keep our community strong.

We are also excited to announce that our Medical Scholarship recipient will be confirmed in the coming weeks, with several strong local candidates currently being considered. This scholarship is aimed at supporting future health professionals who want to return to the region and help address critical skills shortages.

Community Consultative Committee (CCC)

The first Community Consultative Committee (CCC) meeting for 2026 was held at Mount Pleasant Operation, in March, bringing together community representatives, local stakeholders, and MACH Energy personnel.

The CCC provides an important forum for open discussion, allowing members to stay informed about site activities, while also sharing feedback, questions, and community perspectives. Topics discussed included current operations, environmental performance, and upcoming activities across site.

We value the input and engagement of CCC members and appreciate the opportunity to maintain open and transparent communication with our community. We look forward to continuing these discussions throughout the year.

Community Sponsorships

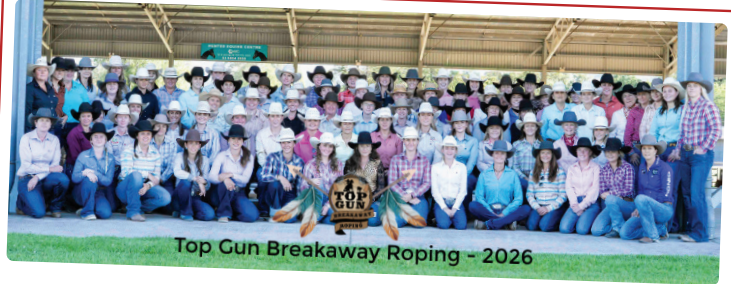
As we wrap up the first quarter of 2026, MACH Energy is proud to reflect on the strong partnerships we continue to build across our local communities.

Over the past three months, we have supported more than forty community organisations, spanning a diverse range of interests and activities. From grassroots football clubs to equestrian groups—including polocrosse and pony clubs—through to agricultural shows, air shows, cricket, tennis, golf, dog trials, schools, and even traditional Highland Games, our commitment remains focused on helping local communities thrive.

These organisations play a vital role in bringing people together, fostering participation, and creating opportunities for all ages. Whether it's supporting young athletes, celebrating regional traditions, or contributing to community events that connect families and friends, we are proud to play a part in their success.



Muswellbrook Charity Campdraft



Top Gun Breakaway Roping Ladies



Upper Hunter Show



Merriwa Junior Rugby League Season Launch



Merriwa Westpac Charity Golf Day



Belltrees Cricket Club Pink Stumps Day



Students visiting the workshop

Upper Hunter Mining Dialogue

St Joseph's Catholic College Aberdeen

Year 9 Geography Students Gain Real - World Insight Through Mine Tour

Report by Wendy Thomas Teacher

As part of the mandatory fieldwork component for Stage 5 Geography, a group of Year 9 students from St Joseph's Catholic College, Aberdeen recently participated in one of three mine tours designed to deepen their understanding of the Australian mining industry.

During the visit, students gained valuable firsthand insight into how a modern mine operates. They had the opportunity to speak directly with geologists and other industry professionals, learning about the role of geology in mining, along with critical topics such as health and safety, the use of explosives, land care practices, and community engagement. The experience provided a real-world connection to classroom learning and highlighted the importance of responsible and sustainable mining practices.

The tour also included a visit to the workshop area, where students met apprentices and learnt about career pathways within the mining industry, giving them a practical perspective on future education and employment opportunities.

St Joseph's Catholic College, Aberdeen would like to sincerely thank Mount Pleasant Operation Mine for providing this valuable educational opportunity and for their ongoing support of student learning through meaningful industry engagement.



Students taking in the scale of the mine from the mine lookout



Students viewing the Mount Pleasant Operation from the mine lookout

"Navigating Today's Fuel Costs"

Across our region, rising fuel prices are being felt by everyone — from households to local businesses and industry. As a site that relies on fuel every day, we understand the pressure this is putting on people across the community.

At MACH Energy, we're aware of what this means not just for our operations, but for the broader region we're part of. Fuel is a big part of what we do, so it's more important than ever that we use it carefully and responsibly.

On site, we're focused on using diesel as efficiently as we can — whether that's making better use of our equipment, cutting down unnecessary idling, or planning our work more thoughtfully. They might seem like small things, but across a large operation, they all add up. We also know these rising costs are being felt well beyond our gate, especially by local families, businesses and community groups. As part of this region, we're committed to doing our bit — supporting our community while continuing to operate safely and responsibly.

The Old Kayuga Coal Mine

The old Kayuga Coal Mine is a testament to the long history of coal mining in our region. The mine operated for almost forty years, from 1892 to 1931, and is located within MACH Energy's mining lease (ML 1645), approximately 5.2km North-west of Muswellbrook.

The site of the old mine has very few standing features. All that remains are three collapsed timber-lined shaft entrances, remains of timber posts, two dams, broken bricks, and areas of coal fines, all of which have been assessed and made safe.

A survey between 2014 and 2020, showed a large deterioration at the site, leading to a conclusion from Extent Heritage that there is a low potential for archaeological relics to survive at the site.



The coal from the old Kayuga Coal Mine was used in the early Muswellbrook butter factory and in the Muswellbrook Council gas works when it was opened. The coal was taken to town by horse and dray, and later by a steam tractor and road trains. Kayuga Coal Mine employed a total of thirteen men in 1923 at its peak.



Project Update

Castlerock Road Diversion Works

The Northern Link Road works are continuing to track well against the project schedule. Sections of the existing Dorset Road will see the final pavement layers placed as well as installation of guard rail in the coming period.

During the next quarter, works will progress to connect the existing Castlerock Road to the new road at the western end, which will include a temporary slip road to maintain access along Castlerock Road near the connection point.

Ongoing works include:

- Finalisation of bulk earthworks and drainage structures
- Permanent pavement construction on Dorset Road and the new diversion road
- Guardrail, sealing and line marking
- Roadworks and safety improvements on the western portion of Castlerock road
- Powerline modifications.

During the construction period, traffic control will be in place with varying speed limits on Dorset Road, Kayuga Road, Wybong Road and Castlerock Road, as well as traffic staging of Dorset Road to facilitate permanent pavement construction.

Project Timing:

- The Castlerock Road link to Dorset Road is on track for opening in Mid-2026.
- General site standard work hours 7:00am to 6:00pm, Monday to Saturday.



Northern Link Road, Dorset Road Widening



Northern Link Road and Dorset Road connection point



Northern Link Road Works

Employee Spotlight – Andrew Raal

My name is Andrew Raal, I'm a Senior Environmental Advisor in the MACH Energy Environment and Community team at Mount Pleasant Operation.

1980's:

Started in the mining industry after completing high school, working underground in ultra-deep level gold mines (3.5km below surface) in South Africa. Not long after, I was moved to surface operations when the team leaders discovered I was too young to work underground. I was put on surface training and cutting rails using an oxy cutting-torch.

Following two years of conscription in the South African military, I shifted my career path into geology through a bursary program that combined six months study with six months practical work.

1995:

Working in South African coal mines, across mining and exploration geology, as well as environmental management. During this time, I completed a master's degree in environmental management.

2006:

Moved to Australia and worked in Western NSW within the metalliferous mining industry (copper & lead), followed by two years of environmental consulting.

2012:

I took on a role as a resource geologist in Mongolia, contributing to a new coal mine development project, while also completing a master's degree in GIS and Remote Sensing.

2018:

I have been working in NSW coal mines since 2018, focusing on environmental management, and currently part of the MACH Energy Environment and Community Team at Mount Pleasant Operation.

What's something about your job that would surprise people to know?

Work is varied from environmental compliance, reporting, dealing with hazardous wildlife, to managing spatial information systems and databases.

A lesser-known aspect of my role, I do some computer coding and scripting for data extraction and automation of processes. This includes Python, JavaScript, Visual Basic for Applications (VBA) and SQL.

What do you do in your downtime?

I enjoy bushwalking, kayak fishing, and I'm actively involved in my local church group.

How do you view the mining industry?

Having been engaged within the mining industry since early 1980's, I have found it to be very rewarding with constant opportunities to upgrade my skillset. My career journey has also required living and working in different countries including Southern Africa, Australia & Mongolia.

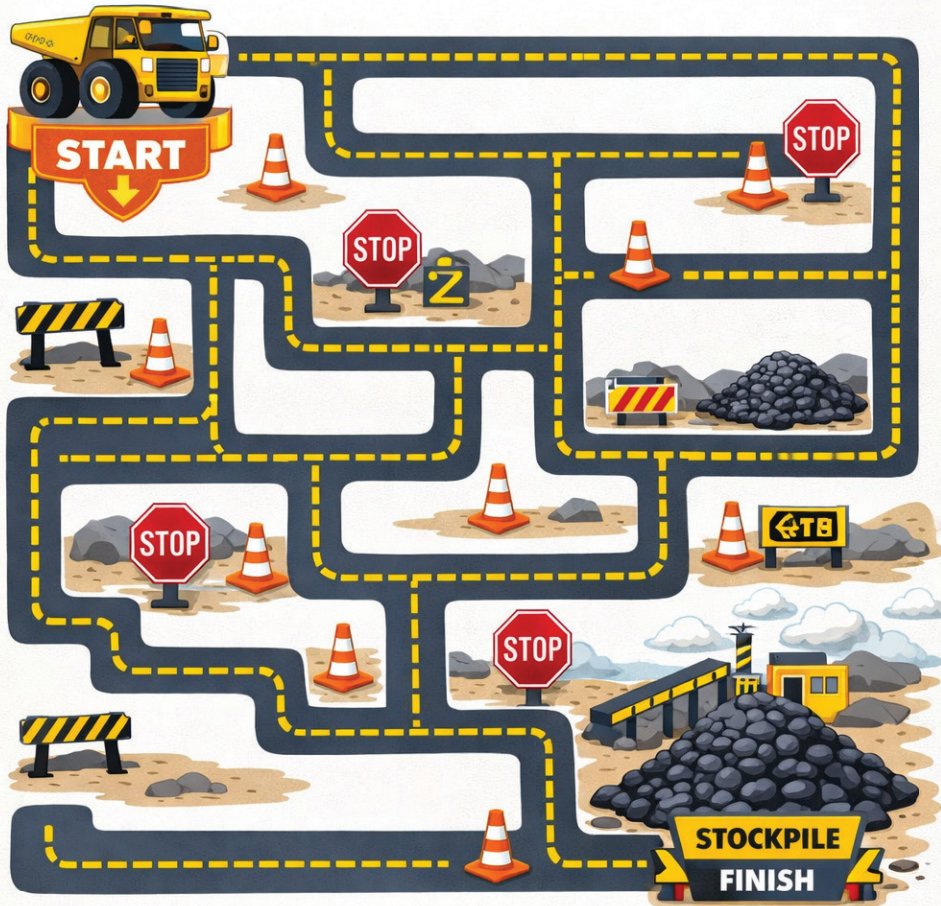
The mining industry represents progress. Without mining the world would still be in the stone age without metals, minerals and energy required for modern civilisation.



Kid's Corner

Activity - Help the Truck get to the Stockpile!

Help the Truck Get to the Stockpile!



Guide the truck through the mine to the stockpile! Watch out for roadblocks!



Fun Facts

- A single Komatsu 930E tyre cost is approx. \$75,000 with each truck having six (6) tyres
- A Komatsu 930E tyre is approx. four (4) metres tall



Community Hotline 1800 886 889

Blasting Hotline 1800 931 872

General Enquiries 1800 931 873

Our goal is to respond to your community feedback as quickly as possible.

24/7 Operation

The Mount Pleasant Operation operates on a 24-hour, seven day a week roster.

Further information, including blast times and location can be found on our website

www.machenergy.com.au or by emailing info@machenergy.com.au

MACHEnergy

Mount Pleasant Operation